

# BEWI Below DPC Cavity Insulation

## Technical Datasheet

Our Below DPC (Damp Proof Course) Cavity Insulation is manufactured from expanded polystyrene (EPS) and is designed to be installed in a cavity wall below DPC level.

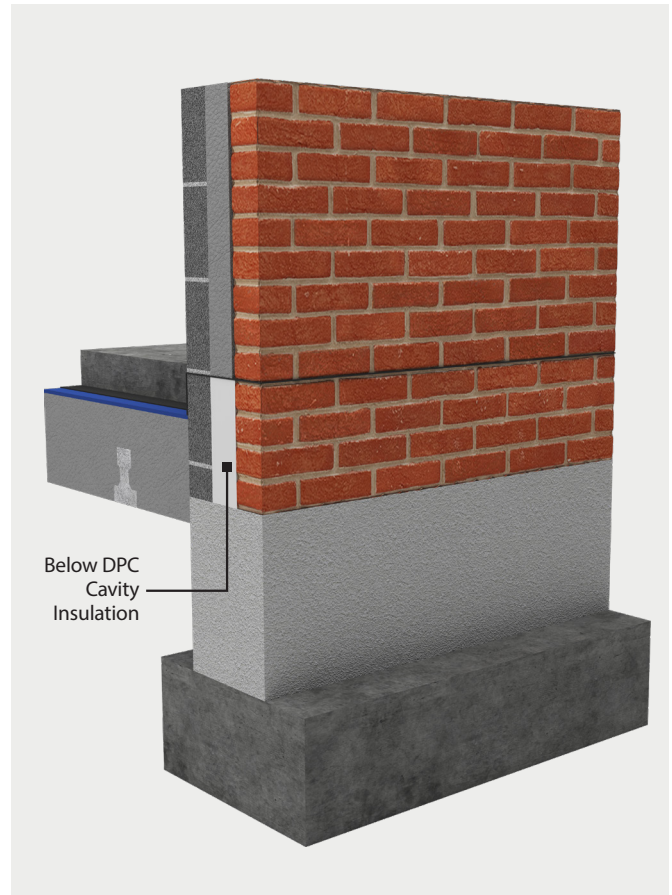
Installing this product will remove the thermal bridge at the junction between the ground floor and the external wall and assists in achieving compliance to Part L1.

### Key Benefits

- Supplied in EPS 70E grade (with flame retardant) or EPS 70 (without flame retardant)
- Extends cavity insulation below floor slab level
- Resistant to ground moisture penetration
- Unaffected by air infiltration
- Lightweight and easy to handle and install
- Improves Psi value
- Links floor and wall insulation
- Provides perimeter insulation to floors
- 100% recyclable

BEWI Below DPC Cavity Insulation is supplied as EPS 70 (as defined in BS EN 13163) and is available in 4 types:

- 1 Below DPC Cavity Insulation Standard (Non Flame Retardant – Reaction to Fire Class F) – **0.038 W/mk**
- 2 Below DPC Cavity Insulation HP+ (Non Flame Retardant – Reaction to Fire Class F) – **0.030 W/mk**
- 3 Below DPC Cavity Insulation Standard (Flame Retardant – Reaction to Fire Class E) – **0.038 W/mk**
- 4 Below DPC Cavity Insulation HP+ (Flame Retardant – Reaction to Fire Class E) – **0.030 W/mk**



For more information:

[bewi.com](http://bewi.com) e-mail: [sales.insulation.uk@bewi.com](mailto:sales.insulation.uk@bewi.com) Tel: 0870 600 3666

# BEWI Below DPC Cavity Insulation

## Technical Datasheet

### Properties:

#### Dimensions:

Standard size: 1200mm x 450mm  
1200mm x 600mm

Standard thickness: 50mm, 70mm, 90mm  
110mm and 140mm

Other depths and thicknesses are available to order.

### Easy to install

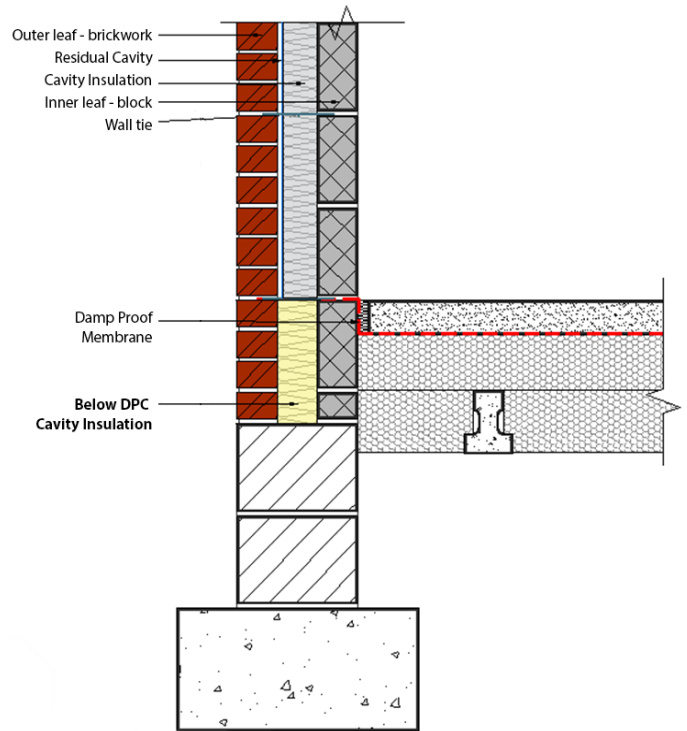
BEWI Below DPC Cavity Insulation is manufactured from expanded polystyrene (EPS) which is lightweight, easy to handle and cut. It is easily installed and there is generally no need for specialised trades or equipment.

### Environment

EPS has been awarded an A+ rating by the BRE's Green Guide to specification.

### Permanent

BEWI Below DPC Cavity Insulation is rot- proof and durable and will remain effective for the life of the building and has the added advantage of being flood-resilient.



### Thermal Resistance

Below DPC Cavity Insulation thickness	Below DPC Cavity Insulation Standard * 0.038 W/mk	Below DPC Cavity Insulation HP+ * 0.030 W/mk
50 mm	1.30 m <sup>2</sup> K/W	1.65 m <sup>2</sup> K/W
70 mm	1.80 m <sup>2</sup> K/W	2.30 m <sup>2</sup> K/W
90 mm	2.35 m <sup>2</sup> K/W	3.00 m <sup>2</sup> K/W
110 mm	2.85 m <sup>2</sup> K/W	3.65 m <sup>2</sup> K/W
140 mm	3.65 m <sup>2</sup> K/W	4.65 m <sup>2</sup> K/W

\* Available in Non Flame Retardant - Reaction to Class F and Flame Retardant - Reaction to Class Class E

Refer to the national Building Regulations for types of buildings and any product restrictions / exclusions that may apply prior to use and or inclusion in any specification.

Disclaimer: Every effort has been made to ensure the correctness of the information provided in this data sheet and is based on data and knowledge accurate at the time of production. It is designed for experienced professionals in the building and construction industry and does not offer a complete overview of industry practices. Therefore, this cannot guarantee the performance results, as usage and installation conditions are outside our control. If you have any questions regarding the suitability of the application, please contact us.

For more information:

bewi.com e-mail: sales.insulation.uk@bewi.com Tel: 0870 600 3666

© BEWI TDS-02W-BDI-V02 JUN 2026

# BEWI