

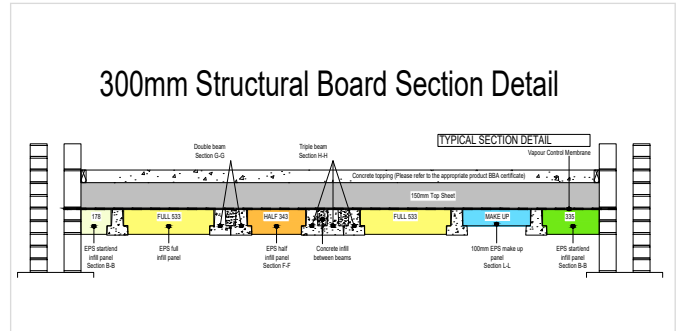
Residential Product Overview

Thermal Floor System

Designed to replace block and beam suspended floors with a fast, safe build and an excellent thermal performance that assists with achieving Part L compliance.

Key Benefits

- Quotations within 24 hours
- Achieves specified U-values
- BBA Certified
- Used by the vast majority of house builders
- Reduced excavation



Garage Floor System

The system is engineered to provide the required performance and combines pre-stressed concrete beams, EPS panels, A142 steel mesh and structural concrete topping.

Key Benefits

- Direct alternative to a traditional beam and concrete block solution
- System fully supplied by BEWI
- No need to utilise heavy concrete blocks
- Extremely cost competitive
- BBA Certified

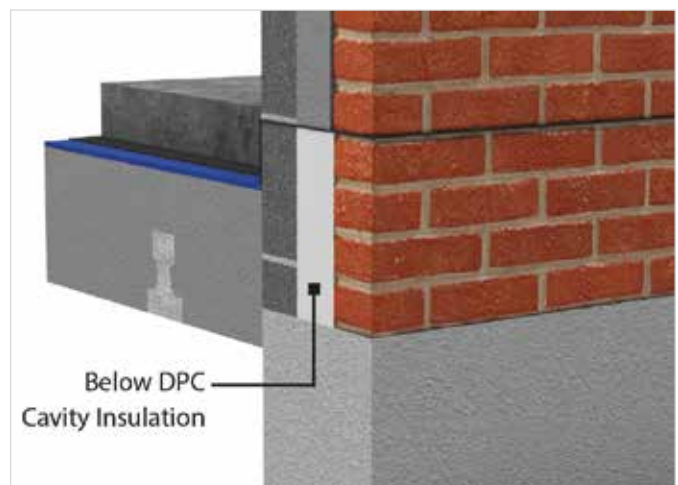


Below DPC Cavity Insulation

Our Below DPC (Damp Proof Course) Cavity Insulation is manufactured from expanded polystyrene (EPS) and is designed to be installed in a cavity wall below DPC level.

Key Benefits

- Supplied in EPS 70E grade (with flame retardant) or EPS 70 (without flame retardant)
- Improves Psi value
- Extends cavity insulation below floor slab level
- Links floor and wall insulation
- Resistant to ground moisture penetration
- Provides perimeter insulation to floors



For more information:
bewi.com e-mail: enquiries.insulation.uk@bewi.com Tel: 0870 600 3666

Residential Product Overview

FormMaster

BEWI FormMaster Shuttering provides a permanent formwork system for ground beam foundations. Along with standard profiles sheets, we can offer U-shaped, L-shaped and side shuttering.

Key Benefits

- Reduces concrete wastage
- Supplied as flat panels for on-site formwork fabrication or pre-shaped to the desired profile
- Ideal for use with HeaveMaster, Ground Heave Protection and Claymaster
- Can be supplied as a package with all spacers, connectors and tape

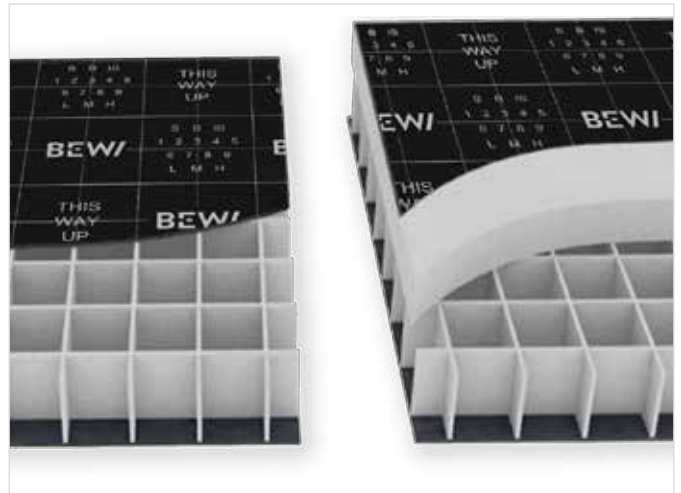


HeaveMaster and Pile Collars

HeaveMaster is an engineered cellular-structured void former that is precision-cut from EPS (expanded polystyrene) and protects against vertical Ground Heave Protection for beam, slab or insulated slab applications.

Key Benefits

- Meets NHBC Technical Standards
- BBA Certified
- Bonded bottom sheet removes need for sand/cement blinding layer
- 1200 x 1200 boards aid a fast, easy installation
- Available with bonded EPS insulation board
- BEWI Pile Collars Speed up the application process (no need to cut material on site)

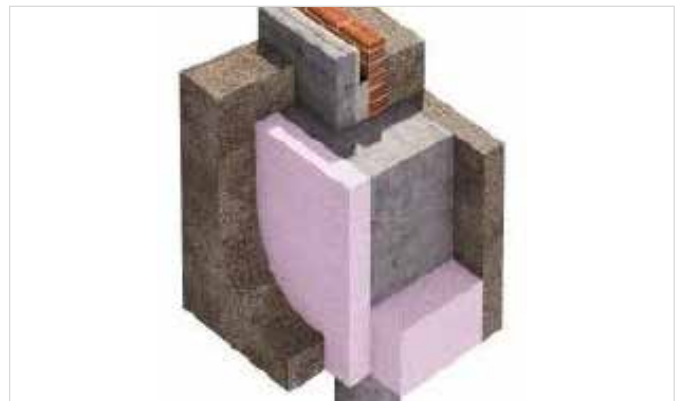


Claymaster

BEWI ClayMaster is an EPS compressible-fill material used to reduce the pressure against foundations due to clay heave. Supplied coloured pink to easily differentiate from standard EPS.

Key Benefits

- BBA Certified
- A permanent solution to clay heave problems
- Negligible compression during concrete casting
- Resistant to moisture
- Lightweight and Durable
- A+ rated in the BRE Green Guide to Specification



For more information:
bewi.com e-mail: enquiries.insulation.uk@bewi.com Tel: 0870 600 3666