

Civils Product Overview

HeaveMaster and Ground Heave Protection

BEWI HeaveMaster provides a stable platform to support a specified depth of wet concrete during construction and, a fully-tested cellular core that will collapse under the specified fail-load pressure to limit damage caused if upward pressure occurs.

Key Benefits

- Protects buildings against upward pressure caused by ground heave
- BBA Certified
- Meets NHBC Technical Standards
- 1200 x 1200 boards aid a fast, easy installation
- Available with bonded EPS insulation board



Pile Collars

BEWI Pile collars are an integral part of the BEWI HeaveMaster system. They are supplied in bespoke sizes to meet the project requirements.

Key Benefits

- Speed up the application process (no need to cut material on site)
- Protect the structure against Ground Heave
- Work with BEWI Ground Heave Protection and HeaveMaster
- Minimise gaps around foundation piles

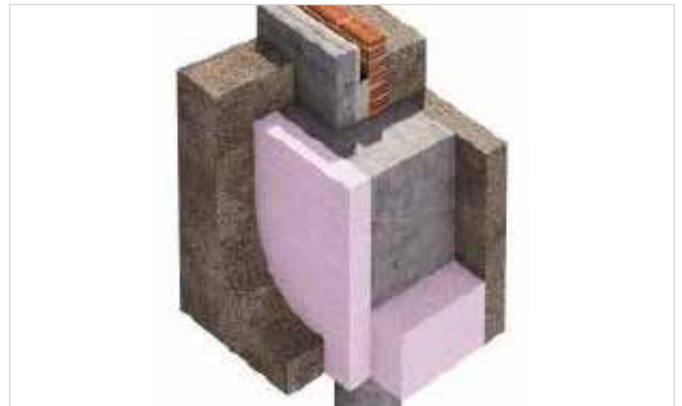


Claymaster

BEWI ClayMaster is an EPS compressible-fill material used to reduce the pressure against foundations due to clay heave. Supplied coloured pink to easily differentiate from standard EPS.

Key Benefits

- BBA Certified
- A permanent solution to clay heave problems
- Negligible compression during concrete casting
- Resistant to moisture
- Lightweight and Durable
- A+ rated in the BRE Green Guide to Specification



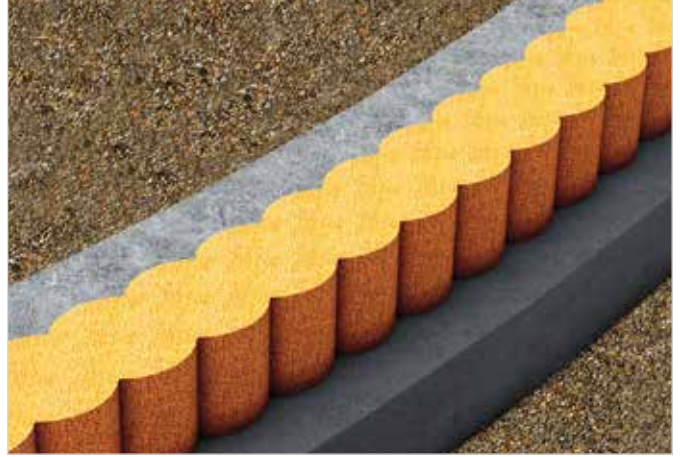
Civils Product Overview

Sacrificial Guide Wall Formers

BEWI Sacrificial Guide Wall Formers are a time saving solution for the construction of piled foundation systems.

Key Benefits

- Tailored to your pile layout requirements
- Factory-cut and delivered ready to use
- Simple installation for accurate wall alignment
- Supplied in overlapping sections for quick assembly
- Left in place; EPS allows rigs to auger through
- Single-use design
- Made from 100% recyclable EPS
- Cost-effective solution



FillMaster

FillMaster is a geotechnical product used in fill applications where a lightweight material is required to reduce stresses on underlying soils or lateral pressures.

Key Benefits

- Excellent compression properties
- High-strength-to-weight ratio
- Resistant to moisture
- Inhibits water absorption
- Contains Class E flame retardant additive
- 100% recyclable
- Manufactured from EPS (expanded polystyrene)
- EPS has an A+ rating in the BRE Green Guide to Specification
- Can be provided in bespoke cuts/shapes (cut drawings can be provided)



Sheet Pile Infill

BEWI Sheet Pile Infills provide a quick and cost effective solution to infilling the open voids in an exposed sheet pile wall. The expanded polystyrene infills are cut to suit the pile shape and are available in a range of profiles and densities to meet project requirements.

Key Benefits

- Provides a flat surface to aid the installation of any required membranes
- Aids the removal of sheet piles if required
- Reduces the volume of concrete pour
- Removes the need for backfilling in a confined space

